

USER'S INSTRUCTIONS

www.RUNPOTEC.com

I STANDARD FUNCTION

The appliance must only be used in conjunction with **POWER SPIRALE I**

Plug in the nozzle.



Push on the red locking rings.



Insert the spirals or feed them through.



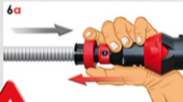
Close the red locking rings.



Press the pushbutton until it latches.



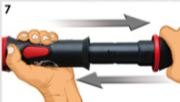
Push in the corrugated pipe as far as the stop and fix it with the locking ring.



Insert the nozzle in the corrugated pipe.



Push in the metal spiral by pumping.



II RATCHET FUNCTION

Activate the ratchet function as soon as resistance is met which cannot be overcome by normal pumping.

Wind the clamping grip tight in a clockwise direction.



Turn the grip ratchet, at the same time pushing it forwards.



SERVICING / CLEANING

Rinse the appliance through with clean water regularly every week at the cleaning openings (A), the locking openings (B) and at the telescopic pipe (C).



Never use chemical, or greasy/oily cleaning agents, but only water or compressed air!

Never use the cable puller on cables which are live!