

DATA SHEET

RUNPOMETER RM35 - CALIBRATED

Digital cable length measuring device

Art. No.: 10184



VIDEO



RUNPOMETER RM35

Click here for video

CALIBRATED!

See page 2 and 3!



Click here Product information



folding



Interior view of case

Perfectly stowed



USB-C charger cable

Scope of delivery

RUNPOMETER RM35 including accessories:



Connecting pad

Mounting plate

Guide jaws

belt with clip system

Application images

Attached to cable drum unwinder with connecting pad and belt



Connected to XB 500 with belt and clip system



Connected to professional set fibreglass rod Ø 4.5 mm with belt and clip system



DATA

ARTICLE NO.	10184		
DIMENSIONS RM 35	L 160 mm x W 125 mm x H 97 mm		
DISPLAY	1.5" LCD display (with backlighting)		
CABLE Ø	from Ø 2 mm - 32 mm		
WEIGHT RM35	0,95 kg	WEIGHT TOTAL	3.64 kg (RM35 + accessories + case)
MEASURING ACCURACY	Accuracy class III - valid from 5 meters		
UNIT OF MEASUREMENT	Metres/Feet		
POWER SOURCE	Lithium Ion battery - continuous operation 100 hrs. (without lighting)		
CALIBRATED	Yes according to Module F - individual serial number Validity: see recalibration sticker RM35 in front		
PROTECTION CLASS	IP 44		
EAN-CODE	9120045476910		

DESCRIPTION

The RUNPOMETER RM35 - **calibrated** is a digital cable length measuring device which can be used to precisely measure cables, single conductors, ropes, pipes or hoses with a diameter of Ø 2 mm to Ø 32 mm. It is splashwater resistant- and dust resistant, extremely shock-resistant and thus ideally suited for the jobsite. The RM35 has 2 totalling buttons which can be used to add up the measured values as you work. A countdown function is also included, which can be used to measure predetermined cable lengths. The RM35 is equipped with a lithium-ion battery that has an extremely long runtime (100 hrs. continuous operation without backlighting). The battery can be charge using the integrated USB-C charging socket. The RUNPOMETER RM35 is perfectly stowed in the RUNPOTEC system case, which is also compatible with Sortimo cases. The RUNPOMETER can be easily connected to the X BOARD XB 300 or XB 500 cable unwinding system via the supplied belt and clip system. The belt length can be adjusted from 750 mm to 1200 mm. Alternatively, this belt can also be fixed to the connecting pad, thereby offering a fixation option for all conventional rolling systems.

Calibrated: on page 2 you will find a description of calibration and on page 3 - the certificate of conformity (example)

Application video: a short, very informative application video can be viewed by scanning the QR code or on www.runpotec.com.

Scope of delivery: 1 x RUNPOMETER RM35 - calibrated, 1 x belt with clip system 1200 mm, 1 x connecting pad, 1 x mounting plate system case, 2 x guide jaws grey (Ø 12 mm / 18 mm), 2 x guide jaws red (Ø 6 mm / 24 mm), 1 x USB-C charging cable, 1 x mains plug, 1 x RUNPOTEC system case

ADVANTAGES

- ✓ Jobsite capable
 - ▶ Splash water & dust protected
 - ▶ Impact and breakage protected
- ✓ For versatile use with cables of Ø 2 mm - 32 mm, single conductors, ropes, pipes
- ✓ Compatible with all unwinding systems
- ✓ Calibrated - valid 2 years
- ✓ For measuring lengths with cable pulling systems
- ✓ Easy to use
 - ▶ Totalling function
 - ▶ Countdown function with signal

INFORMATION

Suitable unwinding systems:

X-BOARD XB 300 & XB 500

Art. no: 10137 & 10136

Click here Product information



Cable drum unwinder PRO 530 / 670

Art. No.: 10134 / 10135

Click here Product information



RUNPOLIFTER 4500

L1150 - Article no.: 10162

L1350 - Article no.: 10163

L1600 - Article no.: 10164

Click here Product information



RM35 CALIBRATED TEST ACCORDING TO MODULE F

1 GENERAL INFORMATION

- ▶ Whether calibrated or not, **every RM35 measures the same and fulfills to accuracy class III** (document available) – valid from 5 meters
- ▶ There are **2 item numbers**: 10172 (not calibrated – type test according to module B) and 10184 (calibrated - type test according to module F)
- ▶ The **initial test must be carried out by RUNPOTEC or rather the notified agency** (authority that issued the EU type examination certificate). Issues a Certificate of Conformity according to Module F (see point 4)

2 RM35 CALIBRATED - ITEM NUMBER

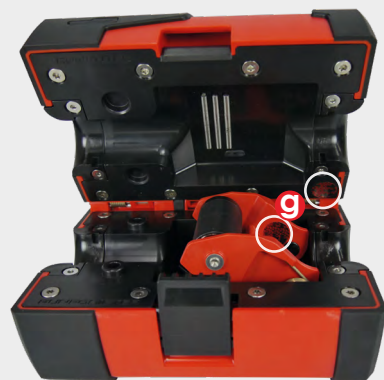
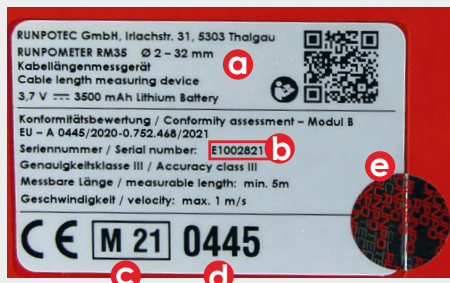
- ▶ **New Item number: 10184**

3 INSPECTION LABELS

- a** New test badge back side RM35
- b** Continuous serial number z.B.: E1002821
- c** Year of review **M 21**
- d** Number of the notified centre **0445**
- e** Sealing badge

- f** Recalibration sticker front (Validity period 2023) Valid for 2 Jahre years i.e. Recalibration must take place on 01.01.2024 at the latest.

- g** 2 pieces Sealing plates inside RM35



4 CONFORMITY ASSESSMENT ACCORDING TO MODULE F (CALIBRATED)

- h** Certificate of conformity to European standard with reference to serial number (enclosed with each RM35 item number 10184) can also send as a PDF



5 RECALIBRATION

- ▶ 2 years after initial issue see example **f**
Recalibration must then always be carried out in the respective country by a certified calibration laboratory.

RM35 CALIBRATED TEST ACCORDING TO MODULE F

1 GENERAL INFORMATION

- ▶ Whether calibrated or not, **every RM35 measures the same and fulfills to accuracy class III** (document available) – valid from 5 meters
- ▶ There are **2 item numbers**: 10172 (not calibrated – type test according to module B) and 10184 (calibrated - type test according to module F)
- ▶ The **initial test must be carried out by RUNPOTEC or rather the notified agency** (authority that issued the EU type examination certificate). Issues a Certificate of Conformity according to Module F (see point 4)

2 RM35 CALIBRATED - ITEM NUMBER

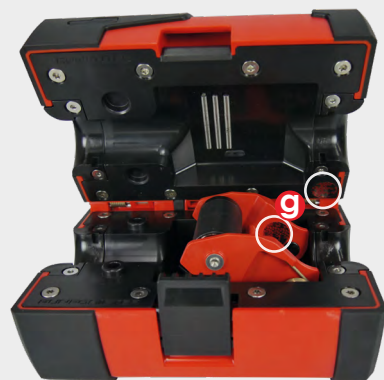
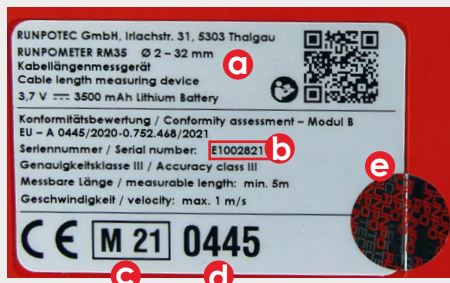
- ▶ **New Item number: 10184**

3 INSPECTION LABELS

- a** New test badge back side RM35
- b** Continuous serial number z.B.: E1002821
- c** Year of review **M 21**
- d** Number of the notified centre **0445**
- e** Sealing badge

- f** Recalibration sticker front (Validity period 2023) Valid for 2 Jahre years i.e. Recalibration must take place on 01.01.2024 at the latest.

- g** 2 pieces Sealing plates inside RM35



4 CONFORMITY ASSESSMENT ACCORDING TO MODULE F (CALIBRATED)

- h** Certificate of conformity to European standard with reference to serial number (enclosed with each RM35 item number 10184) can also send as a PDF



5 RECALIBRATION

- ▶ 2 years after initial issue see example **f**
Recalibration must then always be carried out in the respective country by a certified calibration laboratory.