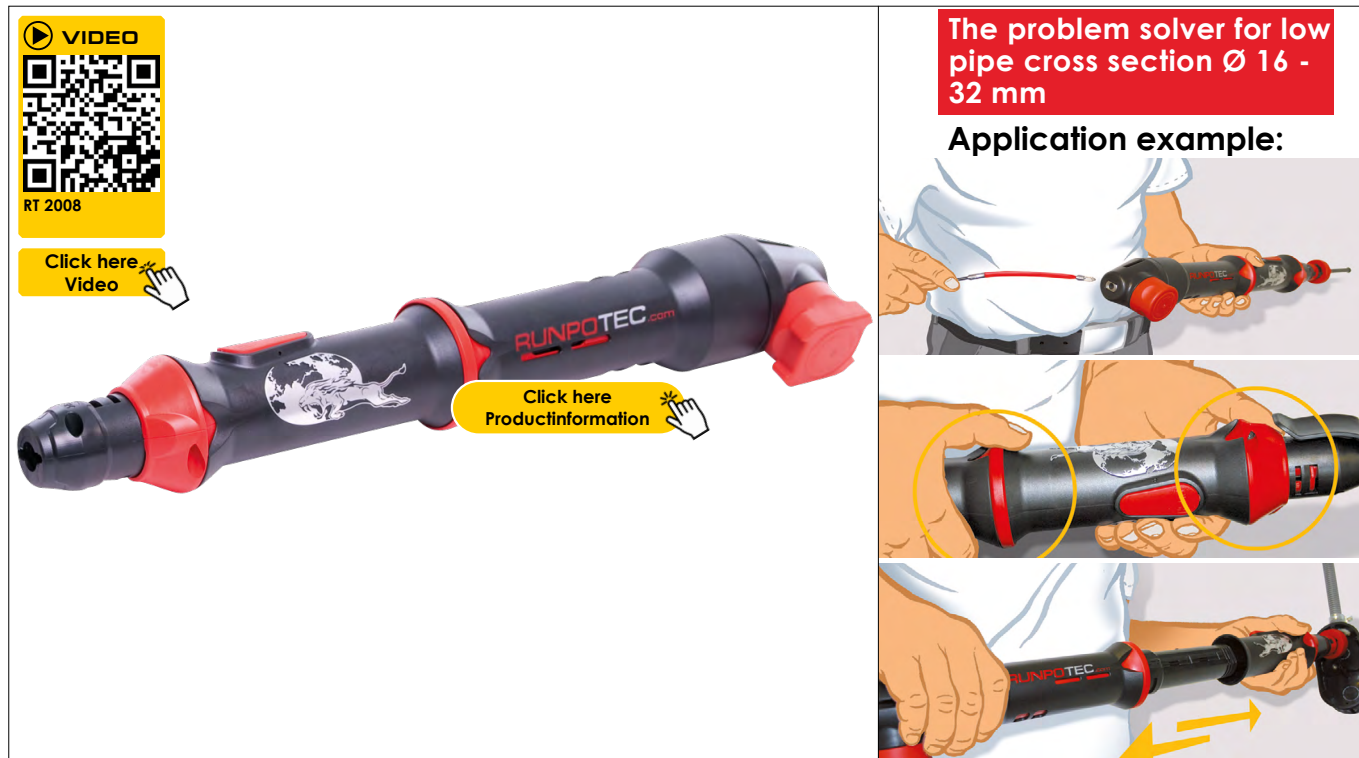


DATA SHEET

RUNPOTEC RT 2008 - BASIC UNIT

optimal for pipe diameters 16 - 32 mm

Item no.: 20004



The problem solver for low pipe cross section Ø 16 - 32 mm

Application example:

DATA	
ITEM NO.	20004
WEIGHT KG	3,23 kg
DIMENSION	515 x 65 x 65 mm
MATERIAL RT2008	Special plastic
TOTAL BREAKING LOAD	170 kg (RUNPOGLIDER Spirale MET)
DISTANCES	0,50 m - 30 m
PIPE Ø	optimal for 16 - 32 mm
EAN-CODE	9120045472585

ADVANTAGES

- ✓ Extreme advance force through telescopic rod
- ✓ Overcomes the tightest radii due to rotation capability
- ✓ Highest torque when using an additional cordless screwdriver
- ✓ Patented global innovation

DESCRIPTION

Revolutionary cable pulling system - an absolute problem solver with patented penetrating power.

The RT 2008 can only be used in combination with the RUNPOGLEITER spiral MET. Due to the integrated clamping jaws and the telescopic rod, the RT 2008 ensures an incomparable spiral feed. Thanks to the straight guide, the muscle power applied can be transferred directly to the pull-in spiral. In addition, the RUNPOGLEITER Spirale MET can be set in rotation by means of the third clamp and the ratchet handle. This enables continuous feed even with tight radii and longer distances.

As of lengths of 20 m RUNPOTEC recommends supporting this with a cordless drill.

Optimal application area: for pipe dimensions 16 mm - 32 mm

APPLICATION VIDEO: You can watch a short, very informative application video by scanning the QR code or on www.runpotec.com.

Scope of delivery: RT 2008 basic unit without plug attachments, plug-in coupling and belt clip

INFORMATION

Complete SET:

RT 2008 incl.

RUNPOGLIDER Spirale MET

Item no.: 10000



Click here Productinformation

Compatible accessories

RUNPOGLIDER Spirale MET

Length 5 - 30 meter

Item no.: 30054 / 30017 / 30018 / 30019 / 30020 / 30021



Click here Productinformation